

7 YEAR
160,000KM

LDV WARRANTY
ROADSIDE ASSIST & WOF*

eDELIVER 3



LDV

eDELIVER 3

7 YEAR
160,000KM

LDV WARRANTY
ROADSIDE ASSIST & WOF*

The **eDeliver 3** is a small but mighty van that works hard with electric power. It's also the first proper, completely purpose-built mainstream electric van to go on sale in New Zealand. The eDeliver 3 is compact, lightweight and can carry an impressive 905kg payload.

COMPACT EFFICIENCY

eDeliver 3 doesn't scrimp on cargo space, with the short wheelbase offering optimal ease of loading with 1,665mm compartment width and the single sliding door allowing for 4.5m³ of cargo.

eDELIVER 3	VOLUME	PAYLOAD
	4.5m ³	905kg*



SAFETY FIRST

Safety is paramount for LDV and eDeliver 3 offers advanced driver assistance system as standard with the latest generation of Electronic Stability Program delivering comfort and peace of mind while you're on the job. Other safety features include Cruise control, Antilock Braking System, Electronic Stability Program, Hill Start Assist, Visual Reversing Camera and Tyre Pressure Monitoring System.

BEAT THE HEAT

Stay cool at all times with the eDeliver 3's air conditioning system, which was designed with New Zealand's four-seasons-in-one-day climate in mind. It features manual air conditioning for your comfort, ensuring that the temperature can be quickly and easily adjusted. So, you can always rely on a pleasant work environment, whatever the weather.



CUSTOMISATION

Talk to us about colour choices, customisation, signwriting, parts and accessories – we'll see you right.

eDELIVER 3

7 YEAR
160,000KM

LDV WARRANTY
ROADSIDE ASSIST & WOF*

LDV are market leaders in battery technology and by using various battery cooling methods, eDeliver 3's efficiency has been improved. This well-priced, zero-emission van comes with a 90kW /255Nm motor and a 50.23kW battery.

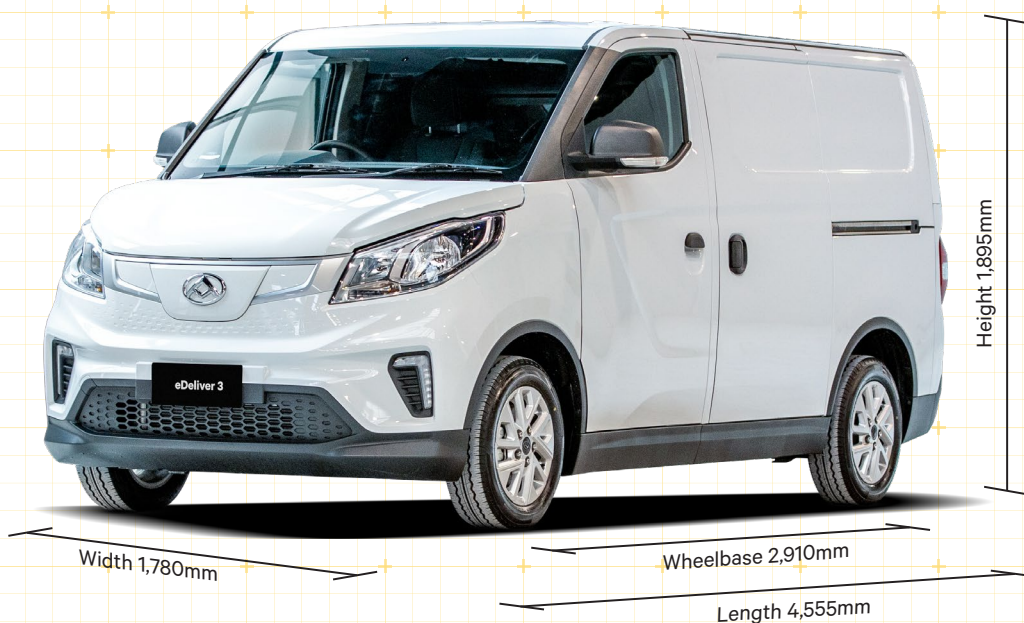


CARRIES: **4.5M³ OF ANYTHING**

Cargo area (mm)
2,160(L) x 1,665(W) x 1,330(H)
Single sliding doors (double optional)
180° rear barn doors



FIND OUT MORE



POWERED BY:

PERMANENT MAGNET SYNCHRONOUS MOTOR

Power: 90kW • Eco and Power mode
Torque: 225Nm

KEY FEATURES

- 7" Infotainment System with Apple CarPlay®
- Cruise Control
- Rear View Camera
- Tyre Pressure Monitoring System
- Traction Control System
- Electronic Stability Program
- Warranty 7-Years/160,000km* (whichever occurs first)

Disclaimer: Safety technologies may not operate optimally under all driving conditions, operation and effectiveness depends on many factors. Driver is responsible for safe and attentive driving. Safety technologies are not a substitute for the driver's control over the vehicle. See owner's manual for complete details. Payload and tare weight figures are based on vehicle certification. It is the driver's responsibility to ensure: weight of fully loaded vehicles do not exceed GVM; front and rear axle load limits are not individually exceeded; the combined weight of the fully loaded vehicle (including tow ball download when towing) and trailer does not exceed the GCM; compliance to New Zealand towing regulations. Payload is the combined value of occupants, luggage, cargo, added options, accessories and tow ball download (when towing). Additional weights of optional features, occupants, luggage, cargo, accessories and tow ball download (when towing) must be taken into account when calculating payload and tare weight. When a genuine tow bar with wiring is fitted, and trailer is attached, parking sensors will be disabled.

*The warranty is valid for vehicles registered on or after 1 January 2025 and covers a period of 7 years or 200,000km (whichever comes first) for Internal Combustion Engine (ICE) powered vehicles or 7 years or 160,000km (whichever comes first) on Electric Vehicles (EVs), starting from the date of first registration. It covers manufacturing defects caused by issues such as design, assembly, or raw materials in covered parts but excludes routine maintenance, wear-and-tear items, and damage caused by misuse, accidents or unauthorised repairs. To maintain the warranty, the vehicle must be serviced as per the maintenance schedule set out in the Service & Warranty Booklet. Warranty claims require proof of purchase and service records. The initial Warrant of Fitness (WOF) is provided at vehicle registration, with subsequent annual inspections required from the 3rd year. This warranty covers the subsequent WOF inspections at years 3, 4, 5, 6, 7 at an LDV Authorised Service Centre. This warranty complies with local laws and does not limit or exclude your statutory rights under the Consumer Guarantees Act. For full details, visit <https://ldv.co.nz/warranty/>.

ALL RIGHTS RESERVED. LDV New Zealand reserves the right to vary vehicle specifications and standard features in New Zealand from those detailed in this brochure. Vehicles shown in this brochure may be fitted with accessories or may feature equipment that is not available in New Zealand-spec models. Please check with your local authorised LDV Dealership. No part of this brochure can be reproduced without written permission from LDV New Zealand. Visit ldv.co.nz

For more information, visit ldv.co.nz



eDELIVER 3 TECHNICAL SPECIFICATION

7 YEAR
160,000KM

LDV WARRANTY
ROADSIDE ASSIST & WOF*

Variant	50.23kW
Transmission	CVT
Drive	RWD

General

Warranty 7-Year/160,000km (whichever occurs first)	•
Type	Permanent magnet synchronous motor
Maximum Power (kW/rpm)	90kW
Maximum Torque (Nm/rpm)	225Nm
Electricity Consumption (Wh/km)	23.7
Eco/Power Mode	•

Battery

Type	Lithium-ion
Capacity	50.23

Steering, Brakes & Suspension

Steering	Hydraulic Steering
Front / Rear Suspension	•
Front / Rear Brakes	Disc/Disc
Wheels and Tyres	15"

Dimensions

Length (mm)	4,555
Width (mm) without wing mirrors	1,780
Height (mm)	1,895
Wheel base (mm)	2,910
Turning Circle (kerb to kerb, metres)	5.87
Ground Clearance (mm)	4.8
Cargo Volume (m ³)	4.5
Cargo area length (mm)	2,160
Cargo area width (mm)	1,665
Cargo area height (mm)	1,330
Width between wheel arches (mm)	1,220
Side door opening width (mm)	710
Side door opening height (mm)	1,230
Front axle capacity (kg)	1,170
Rear axle capacity (kg)	1,460
Gross Vehicle Weight (GVW) (kg)	2,525

Variant	50.23kW
Payload (kg)	905
Braked towing capacity (kg)	750
Unbraked towing capacity (kg)	750
Max tow ball down weight (kg)	250
Towing Capacity – Unbraked (kg)	750

Safety Features

Driver front airbag	•
Cruise Control	•
Anti-Lock Braking System (ABS)	•
Electronic Stability Program (ESP)	•
Hill Start Assist	•
Traction Control System (TCS)	•
Rear Parking Sensors	•
Reverse Camera	•
Tyre Pressure Monitoring System (TPMS)	•

Cargo Area

180° Rear Barn Doors	•
Tie-down Points	•
Heavy duty, non-slip hard rubber flooring	•

Exterior

Halogen Headlights	•
Electric Heated Wing Mirrors	•
Door Handle – Body Colour	•
Front Fog Lamps	•
Rear Fog Lamps	•

Comfort & Convenience

Air Conditioning	•
Power Windows – Front	•
Multifunction Steering Wheel	•

Audio & Communication

7" Infotainment System	•
Apple CarPlay®	•
4 Speaker Sound System	•
USB Port x 2	•

Disclaimer: Safety technologies may not operate optimally under all driving conditions, operation and effectiveness depends on many factors. Driver is responsible for safe and attentive driving. Safety technologies are not a substitute for the driver's control over the vehicle. See owner's manual for complete details. Payload and tare weight figures are based on vehicle certification. It is the driver's responsibility to ensure: weight of fully loaded vehicles do not exceed GVM; front and rear axle load limits are not individually exceeded; the combined weight of the fully loaded vehicle (including tow ball download when towing) and trailer does not exceed the GCM; compliance to New Zealand towing regulations. Payload is the combined value of occupants, luggage, cargo, added options, accessories and tow ball download (when towing). Additional weights of optional features, occupants, luggage, cargo, accessories and tow ball download (when towing) must be taken into account when calculating payload and tare weight. When a genuine tow bar with wiring is fitted, and trailer is attached, parking sensors will be disabled.

*The warranty is valid for vehicles registered on or after 1 January 2025 and covers a period of 7 years or 200,000km (whichever comes first) for Internal Combustion Engine (ICE) powered vehicles or 7 years or 160,000km (whichever comes first) on Electric Vehicles (EVs), starting from the date of first registration. It covers manufacturing defects caused by issues such as design, assembly, or raw materials in covered parts but excludes routine maintenance, wear-and-tear items, and damage caused by misuse, accidents or unauthorised repairs. To maintain the warranty, the vehicle must be serviced as per the maintenance schedule set out in the Service & Warranty Booklet. Warranty claims require proof of purchase and service records. The initial Warrant of Fitness (WOF) is provided at vehicle registration, with subsequent annual inspections required from the 3rd year. This warranty covers the subsequent WOF inspections at years 3, 4, 5, 6, 7 at an LDV Authorised Service Centre. This warranty complies with local laws and does not limit or exclude your statutory rights under the Consumer Guarantees Act. For full details, visit <https://ldv.co.nz/warranty/>.

ALL RIGHTS RESERVED. LDV New Zealand reserves the right to vary vehicle specifications and standard features in New Zealand from those detailed in this brochure. Vehicles shown in this brochure may be fitted with accessories or may feature equipment that is not available in New Zealand-spec models. Please check with your local authorised LDV Dealership. No part of this brochure can be reproduced without written permission from LDV New Zealand. Visit ldv.co.nz

For more information, visit ldv.co.nz





Disclaimer: Safety technologies may not operate optimally under all driving conditions, operation and effectiveness depends on many factors. Driver is responsible for safe and attentive driving. Safety technologies are not a substitute for the driver's control over the vehicle. See owner's manual for complete details. Payload and tare weight figures are based on vehicle certification. It is the driver's responsibility to ensure: weight of fully loaded vehicles do not exceed GVM; front and rear axle load limits are not individually exceeded; the combined weight of the fully loaded vehicle (including tow ball download when towing) and trailer does not exceed the GCM; compliance to New Zealand towing regulations. Payload is the combined value of occupants, luggage, cargo, added options, accessories and tow ball download (when towing). Additional weights of optional features, occupants, luggage, cargo, accessories and tow ball download (when towing) must be taken into account when calculating payload and tare weight. When a genuine tow bar with wiring is fitted, and trailer is attached, parking sensors will be disabled.

*The warranty is valid for vehicles registered on or after 1 January 2025 and covers a period of 7 years or 200,000km (whichever comes first) for Internal Combustion Engine (ICE) powered vehicles or 7 years or 160,000km (whichever comes first) on Electric Vehicles (EVs), starting from the date of first registration. It covers manufacturing defects caused by issues such as design, assembly, or raw materials in covered parts but excludes routine maintenance, wear-and-tear items, and damage caused by misuse, accidents or unauthorised repairs. To maintain the warranty, the vehicle must be serviced as per the maintenance schedule set out in the Service & Warranty Booklet. Warranty claims require proof of purchase and service records. The initial Warrant of Fitness (WOF) is provided at vehicle registration, with subsequent annual inspections required from the 3rd year. This warranty covers the subsequent WOF inspections at years 3, 4, 5, 6, 7 at an LDV Authorised Service Centre. This warranty complies with local laws and does not limit or exclude your statutory rights under the Consumer Guarantees Act. For full details, visit <https://ldv.co.nz/warranty/>.

ALL RIGHTS RESERVED. LDV New Zealand reserves the right to vary vehicle specifications and standard features in New Zealand from those detailed in this brochure. Vehicles shown in this brochure may be fitted with accessories or may feature equipment that is not available in New Zealand-spec models. Please check with your local authorised LDV Dealership. No part of this brochure can be reproduced without written permission from LDV New Zealand. Visit ldv.co.nz